

동상교역
Tel:(02)2234-4178, Fax:(02)6008-1357
사업자등록번호:208-45-64609
415-020 경기도 김포시 금포로 1117-20
김포현대공구타운 가동 1층 25/26호

ACTEK HOIST RING
www.actek.co.kr
actek@actek.co.kr
Safe and Easy Lifting!!
Made in U.S.A.

Pivot Lifting Plates

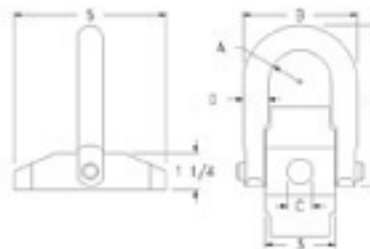
Check up to five results to perform an action.

**High Strength Alloy screws must be used.
Both UNC and Coil available.**

- Large Ball Pivots 180°.
- Rugged tapered plate minimizes shear force on high strength alloy screw.
- Base plate can be welded into position thus eliminating use of screws.
- Aircraft Quality "Chrome Moly" and heat treated.
- Ideal for some OEM applications.
- Rated lifting capacity from 7000 lbs. to 10000 lbs.
- Safety Factor : 5:1.
- Thread engagement 1 1/2 times screw diameter.
- Use high tensile alloy screw equivalent to Grade 8.



[larger image](#)



[larger image](#)

Results1 - 10 of 10

1

<u>Item #</u>	<u>Rated Load</u>	<u>Thread Size</u>	<u>B</u>	<u>Torque</u>
44410	7000 lbs	3/4" - 10	4 13/16 in	100 ft/lb
44415	8000 lbs	7/8" - 9	4 13/16 in	160 ft/lb
44420	10000 lbs	1" - 8	4 13/16 in	230 ft/lb
44421	10000 lbs	1 1/4" - 7	4 13/16 in	230 ft/lb
44423	10000 lbs	1 1/8" - 7	4 13/16 in	230 ft/lb
44610	7000 lbs	3/4" - 10	4 13/16 in	100 ft/lb
44615	8000 lbs	7/8" - 9	4 13/16 in	160 ft/lb
44620	10000 lbs	1" - 8	4 13/16 in	230 ft/lb
44625	10000 lbs	1 1/8" - 7	4 13/16 in	230 ft/lb
44630	10000 lbs	1 1/4" - 7	4 13/16 in	230 ft/lb

Results1 - 10 of 10

1