

동상교역
Tel:(02)2234-4178, Fax:(02)6008-1357
사업자등록번호:208-45-64609
415-020 경기도 김포시 금포로 1117-20
김포현대공구타운 가동 1층 25/26호

ACTEK HOIST RING
www.actek.co.kr
actek@actek.co.kr
Safe and Easy Lifting!!
Made in U.S.A.

Round Base Swivel & Pivot Hoist Rings

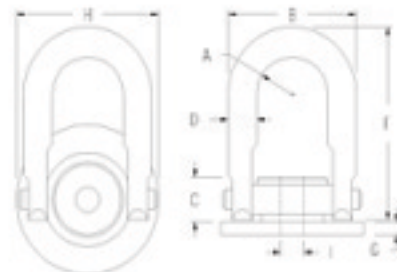
Check up to five results to perform an action.

High Strength Alloy screws must be used.
Both UNC and Coil available.

- Swivel 360° and pivots 180°.
 - Direct mounting.
 - Wide round base helps distribute shear loads.
 - Aircraft Quality "Chrome Moly" and Heat-Treated.
 - Magnetic Particle Inspected.
 - Rated load capacities from 2500 lbs. to 20000 lbs.
 - Many OEM applications.
 - Perfect for pre-cast concrete products : simply cast a threaded anchor or stud into the concrete part. Mount the hoist ring and you have an easy, safe lifting/ handling application.
 - Safety Factor : 5:1.
- Note** :Thread engagement should be 1 1/2 times the diameter of the equivalent of Grade 8 Alloy Screw.



[larger image](#)



[larger image](#)

Results 1 - 24 of 24

1

<u>Item #</u>	<u>Rated Load</u>	<u>B</u>	<u>A</u>	<u>I</u>	<u>Torque</u>
44646	2,500 lbs	3 1/4 in	0.88 in	1/2 in	28 ft/lb
44642	4,000 lbs	3 1/4 in	0.88 in	5/8 in	60 ft/lb
44654	5,000 lbs	3 1/4 in	0.88 in	3/4 in	100 ft/lb
44660	7,000 lbs	4 13/16 in	1.40 in	3/4 in	100 ft/lb
44656	8,000 lbs	4 13/16 in	1.40 in	7/8 in	160 ft/lb
44666	10,000 lbs	4 13/16 in	1.40 in	1 in	230 ft/lb
44802	15,000 lbs	6 in	1.75 in	1 1/4 in	470 ft/lb
44803	15,000 lbs	6 in	1.75 in	1 1/2 in	800 ft/lb
44704	20,000 lbs	7 11/32 in	2.00 in	1 1/2 in	800 ft/lb
44404	24,000 lbs	8 in	2.25 in	1 1/2 in	800 ft/lb

<u>44406</u>	24,000 lbs	8 in	2.25 in	1 3/4 in	800 ft/lb
<u>44408</u>	30,000 lbs	8 in	2.25 in	2 in	800 ft/lb
<u>44646W</u>	2,500 lbs	3 1/4 in	0.88 in	Weld-On	N/A
<u>44642W</u>	4,000 lbs	3 1/4 in	0.88 in	Weld-On	N/A
<u>44654W</u>	5,000 lbs	3 1/4 in	0.88 in	Weld-On	N/A
<u>44660W</u>	7,000 lbs	4 13/16 in	1.40 in	Weld-On	N/A
<u>44656W</u>	8,000 lbs	4 13/16 in	1.40 in	Weld-On	N/A
<u>44666W</u>	10,000 lbs	4 13/16 in	1.40 in	Weld-On	N/A
<u>44802W</u>	15,000 lbs	6 in	1.75 in	Weld-On	N/A
<u>44803W</u>	15,000 lbs	6 in	1.75 in	Weld-On	N/A
<u>44704W</u>	20,000 lbs	7 11/32 in	2.00 in	Weld-On	N/A
<u>44404W</u>	24,000 lbs	8 in	2.25 in	Weld-On	N/A
<u>44406W</u>	24,000 lbs	8 in	2.25 in	Weld-On	N/A
<u>44408W</u>	30,000 lbs	8 in	2.25 in	Weld-On	N/A

Results1 - 24 of 24