

동상교역
Tel:(02)2234-4178, Fax:(02)6008-1357
사업자등록번호:208-45-64609
415-020 경기도 김포시 금포로 1117-20
김포현대공구타운 가동 1층 25/26호

ACTEK HOIST RING
www.actek.co.kr
actek@actek.co.kr
Safe and Easy Lifting!!
Made in U.S.A.

Metric Round Base Swivel & Pivot Hoist Rings

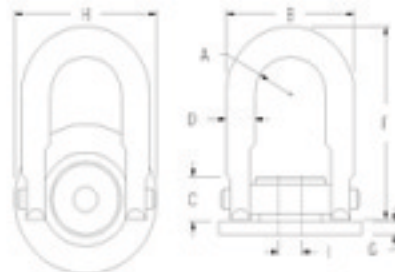
Check up to five results to perform an action.

High Strength Alloy screws must be used.
Both UNC and Coil available.

- Swivel 360° and pivots 180°.
 - Direct mounting.
 - Wide round base helps distribute shear loads.
 - Aircraft Quality "Chrome Moly" and Heat-Treated.
 - Magnetic Particle Inspected.
 - Rated load capacities from 2500 lbs. to 20000 lbs.
 - Many OEM applications.
 - Perfect for pre-cast concrete products : simply cast a threaded anchor or stud into the concrete part. Mount the hoist ring and you have an easy, safe lifting/ handling application.
 - Safety Factor : 5:1.
- Note :** Thread engagement should be 1 1/2 times the diameter of the equivalent of Grade 8 Alloy Screw.



[larger image](#)



[larger image](#)

Results1 - 24 of 24

1

<u>Item #</u>	<u>Rated Load</u>	<u>B</u>	<u>A</u>	<u>I</u>	<u>Torque</u>
44924	1,050 kg	3 1/4 in	0.88 in	M12 mm	37 N·m
44930	1,900 kg	3 1/4 in	0.88 in	M16 mm	80 N·m
44936	2,150 kg	3 1/4 in	0.88 in	M20 mm	135 N·m
44942	3,000 kg	4 13/16 in	1.4 in	M20 mm	135 N·m
44944	4,200 kg	4 13/16 in	1.4 in	M24 mm	311 N·m
44956	7,000 kg	6 in	1.75 in	M30 mm	637 N·m
44960	7,000 kg	6 in	1.75 in	M33 mm	937 N·m
44961	7,000 kg	6 in	1.75 in	M36 mm	1085 N·m
44962	10,000 kg	7 11/32 in	2 in	M36 mm	1085 N·m

<u>44966</u>	11,000 kg	8 in	2.25 in	M36 mm	1085 N·m
<u>44968</u>	12,500 kg	8 in	2.25 in	M42 mm	1085 N·m
<u>44980</u>	13,500 kg	8 in	2.25 in	M48 mm	1085 N·m
<u>44924W</u>	1,050 kg	3 1/4 in	0.88 in	Weld-On	N/A
<u>44930W</u>	1,900 kg	3 1/4 in	0.88 in	Weld-On	N/A
<u>44936W</u>	2,150 kg	3 1/4 in	0.88 in	Weld-On	N/A
<u>44942W</u>	3,000 kg	4 13/16 in	1.4 in	Weld-On	N/A
<u>44944W</u>	4,200 kg	4 13/16 in	1.4 in	Weld-On	N/A
<u>44956W</u>	7,000 kg	6 in	1.75 in	Weld-On	N/A
<u>44960W</u>	7,000 kg	6 in	1.75 in	Weld-On	N/A
<u>44961W</u>	7,000 kg	6 in	1.75 in	Weld-On	N/A
<u>44962W</u>	10,000 kg	7 11/32 in	2 in	Weld-On	N/A
<u>44966W</u>	11,000 kg	8 in	2.25 in	Weld-On	N/A
<u>44968W</u>	12,500 kg	8 in	2.25 in	Weld-On	N/A
<u>44980W</u>	13,500 kg	8 in	2.25 in	Weld-On	N/A

Results1 - 24 of 24